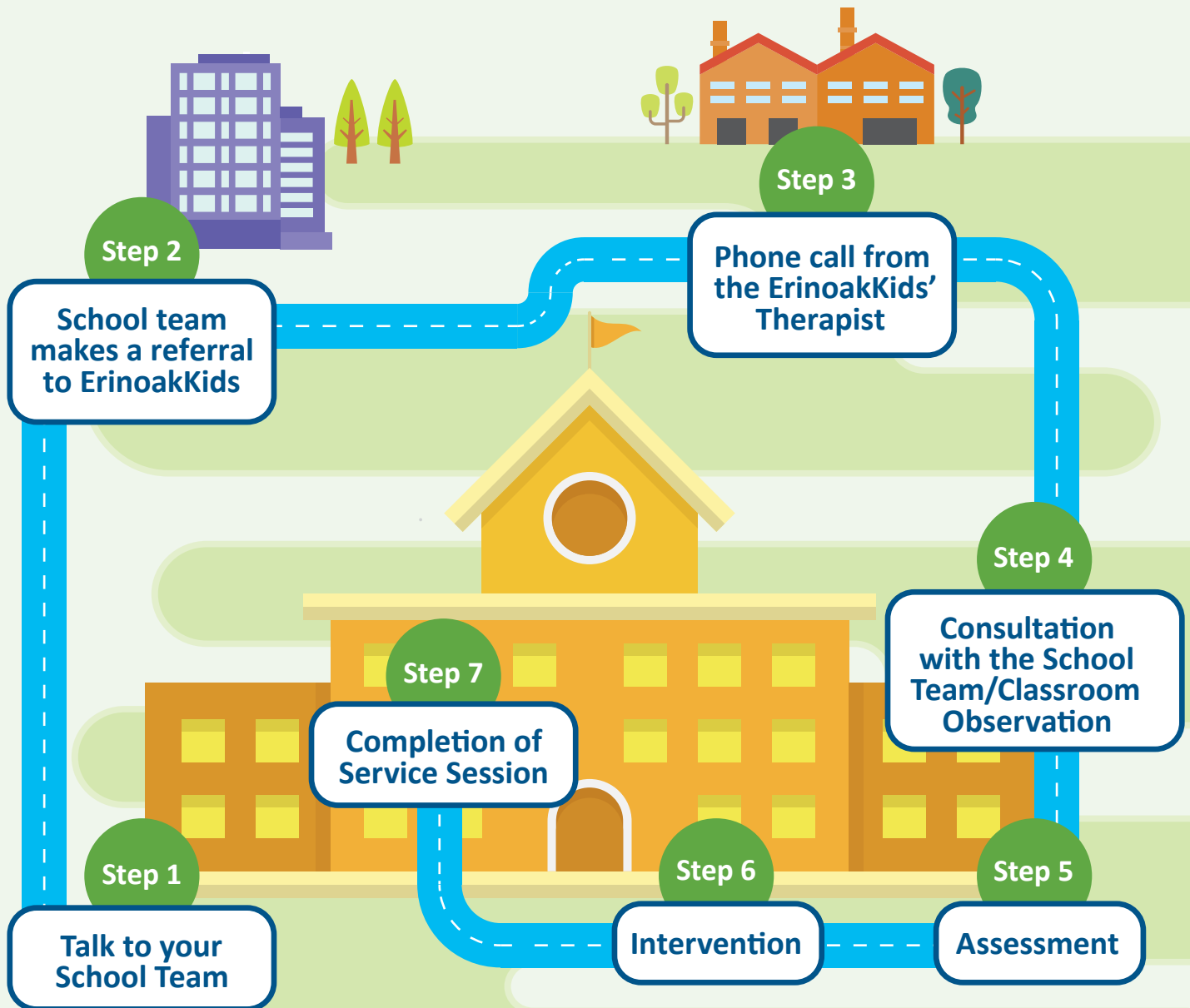


Accessing School Based Rehabilitation Services (SBRS)





Step 1

Talk to your School Team

If you think that your student needs support from an Occupational Therapist, Physiotherapist or a Speech-Language Pathologist to participate in school activities, discuss your concerns with your student's teacher or principal.

Step 2

School team makes a referral to ErinoakKids

The school team, with your consent, will send a referral to ErinoakKids for SBRS. There may be a wait for some services. Please look at our website www.erinoakkids.ca for helpful resources and workshops you may like to attend.

Step 3

Phone call from the ErinoakKids' Therapist

The ErinoakKids' therapist will call you before they do an assessment with your student to talk about the process and get your consent. You will also be encouraged to sign up for our portal ErinoakKids Connect.

Step 4

Consultation with the School Team/Classroom Observation

As part of the assessment, the ErinoakKids' therapist may consult with the school team and/or observe your student in their classroom. In collaboration with the school, they will plan for further assessment if necessary.

Step 5

Assessment

The ErinoakKids' clinician may do some testing with your student and/or try different equipment to assess the best way to meet their needs at school. They will share their suggestions with you and the school team. Some students may be discharged after the assessment if it is determined that they do not require further services.

Step 6

Intervention

Your student may receive individual or group intervention to meet their needs. The ErinoakKids' therapist will work closely with you and your student's school team to set goals and create an intervention plan. Most services will take place at the school. Home intervention for students with complex physical needs may be provided to address home equipment.

Step 7

Completion of Service Session

When your student has completed their period of service, the ErinoakKids' therapist will discuss with you and the school team strategies to continue work towards goals. If needed, they may suggest a re-referral for another session of service.